

# JUQUEEN Porting and Tuning Workshop

2–4 February 2015

JSC

Talks marked with a \* are for the special interest group from earth system modelling. All talks will be in the Rotunda. The hands-on sessions will take place in the computer lab (16.3 021).

## Monday, 02. February

08:45 – 09:00	(15')	Registration
09:00 – 09:15	(15')	Norbert Attig, JSC <i>Welcome and introduction</i>
09:15 – 09:45	(30')	Michael Stephan, JSC <i>BG/Q Hardware</i>
09:45 – 10:30	(45')	Florian Janetzko, JSC <i>Best practices</i>
10:30 – 11:00	(30')	Coffee break
11:00 – 12:00	(60')	Markus Geimer, JSC <i>Performance tools and debuggers</i>
12:00 – 12:30	(30')	Paul Gibbon, JSC <i>Support structure at JSC</i>
12:30 – 13:30	(60')	Lunch break
13:30 – 17:00	(210')	Hands-on session
16:00 – 17:00	* (60')	Earth system modelling groups <i>Presentation of the earth system modelling codes</i>
15:00		Coffee break
17:00 – 17:30	(30')	<b>Feedback and first experiences</b>
17:35 – 17:53		Bus <b>SB20</b> , 'FZJ Seecasino' – Jülich 'Neues Rathaus'
17:40 – 17:53		Bus <b>SB220</b> , 'FZJ Seecasino' – Jülich 'Neues Rathaus'
18:30 –		Social event (dinner)

## Tuesday, 03. February

08:13 – 08:33		Bus <b>SB20</b> , Jülich 'Neues Rathaus' – 'FZJ Seecasino'
<b>09:00</b> – 12:30	(60'-210')	Hands-on session
09:00 – 10:00	(60')	Sebastian Lührs, Kay Thust, JSC <i>Parallel I/O</i>
10:00 – 10:30	(30')	Dirk Pleiter, JSC <i>Realising active storage concepts on BlueGene/Q</i>
<i>10:30 – 11:00</i>	(30')	Coffee break
11:00 – 11:30	(30')	Thorsten Hater, JSC <i>Multithreading with OpenMP</i>
11:30 – 12:00	(30')	Stefan Krieg, JSC <i>Advanced features of BG/Q via intrinsics</i>
<i>12:30 – 13:30</i>	(60')	Lunch break
13:30 – 17:00	(195')	Hands-on session
13:30 – 14:00	(30')	Alberto F. Martín, CIMNE <i>Scaling up Multilevel Domain Decomposition to the full JUQUEEN supercomputer</i>
14:00 – 14:30	* (30')	Catrin Meyer, JSC <i>Performance Analysis of the Climate Model ICON for the Project "High Definition Clouds and Precipitation for advancing Climate Prediction (HDCP2)"</i>
<i>15:00</i>		Coffee break and group photo
17:00 – <b>17:30</b>	(30')	<b>Feedback session</b>
17:35 – 17:53		Bus <b>SB20</b> , 'FZJ Seecasino' – Jülich 'Neues Rathaus'
17:40 – 17:53		Bus <b>SB220</b> , 'FZJ Seecasino' – Jülich 'Neues Rathaus'

## Wednesday, 04. February

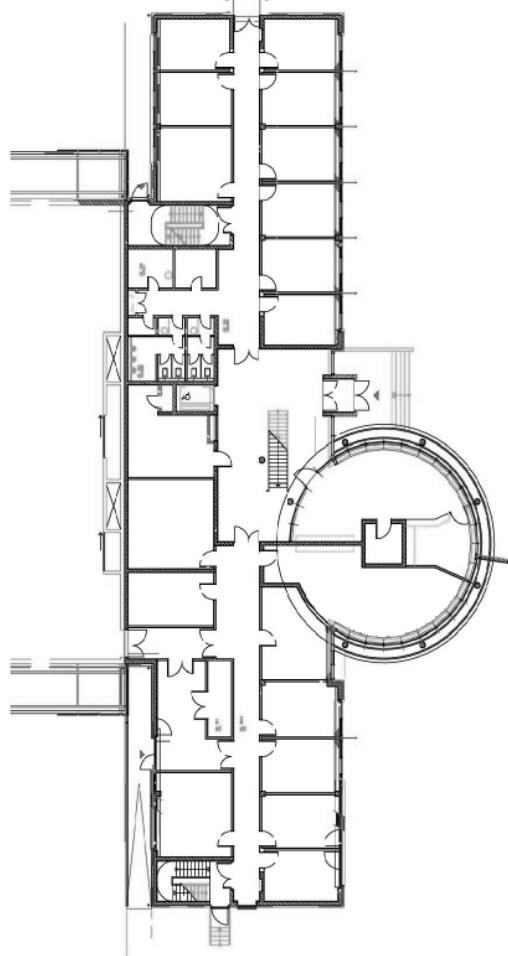
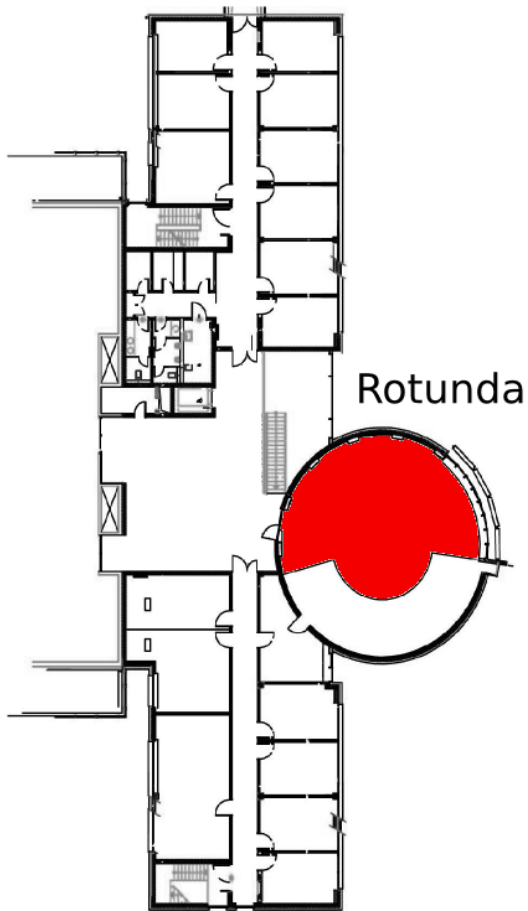
08:13 – 08:33		Bus <b>SB20</b> , Jülich 'Neues Rathaus' – 'FZJ Seecasino'
<b>09:00</b> – 12:30	(90'-210')	Hands-on session
<i>10:30 – 11:00</i>	(30')	Coffee break
<i>12:30 – 13:30</i>	(60')	Lunch break
13:30 – <b>17:00</b>	(195')	Hands-on session
14:15 – 15:00	(45')	<b>Feedback and discussion</b>
<i>15:00</i>		Coffee break

# Ground Floor 16.3

16.3 021



# First Floor 16.4



# Ground Floor 16.4